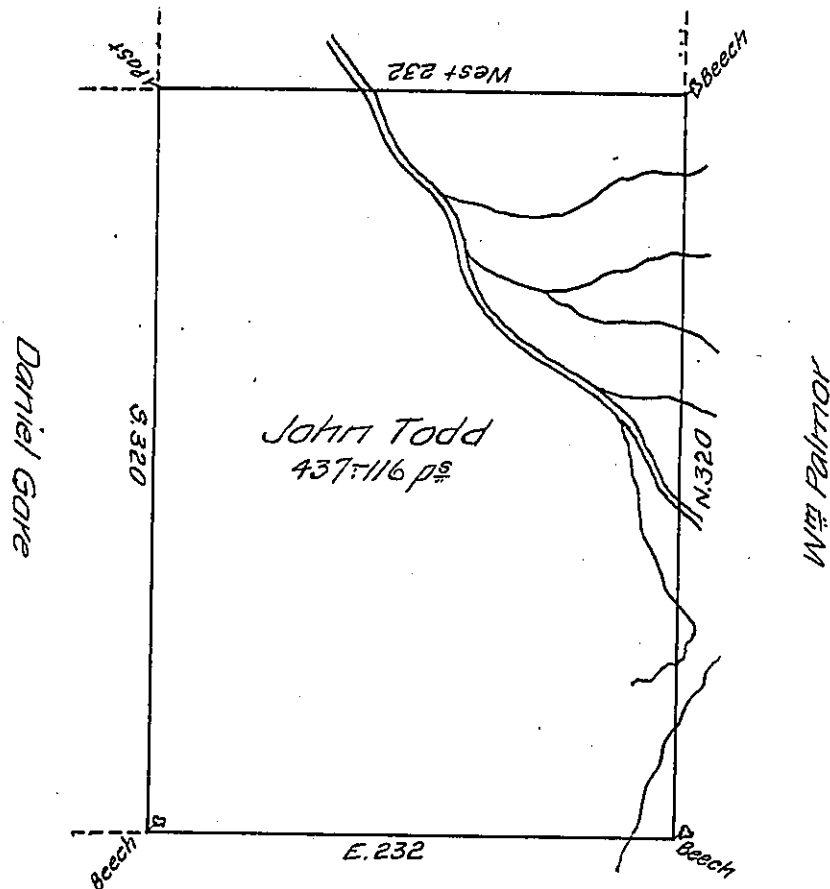


Page 232

John Todd, Junr.



Reuben Downing (2)

By virtue of a Warrant dated 3<sup>d</sup> of Septem<sup>r</sup> 1792 Surveyed the 17<sup>th</sup> of August 1793—Unto John Todd—the above described Tract of Four hundred and thirty-seven Acres and 116 perches of Land and allow<sup>s</sup>. Situated on an Eastern branch of Mahoperry in Luzerne County.

By W<sup>m</sup> Montgomery, D.S.

To Daniel Brodhead, Esq<sup>r</sup>  
 }  
 Survf. Gen<sup>l</sup> of Pensylva<sup>a</sup> }

N. 5

IN TESTIMONY that the above is a copy of the original remaining on file in the Department of Internal Affairs of Pennsylvania, made conformably to an Act of Assembly approved the 16th day of February 1833, I have hereunto set my hand and caused the Seal of said Department to be affixed at Harrisburg, this thirtieth day of November, 1907.

*Henry Howard*  
 Secretary of Internal Affairs.